

COME TO LIFE®





The Caldera Difference.

Our reliable, high-performance spas are designed for comfort, efficient energy use, and simple maintenance so you can enjoy the full wellness benefits that come from a daily soak.

COMFORT

Deep, cradling seats and a textured FootRidge® help you stay relaxed and seated even when enjoying powerful jets. Perfectly positioned hydrotherapy jets melt your tension away.



DESIGN

Every contour a choice. Every innovation, crafted to help you transform. Every decision, made to please. The result? A personal retreat, where you can rejuvenate and transform your body and mind.



PERFORMANCE

Nothing should stand between you and your daily soak. Our materials are selected based on their ability to stand up to everyday use, so your hot tub is ready whenever you are.



The Simpler, Cleaner, Fresher Way to Hot Tub.™

The one-of-a-kind FreshWater® Salt System for Caldera® Spas creates longer lasting, natural feeling water with very little effort on your part. After all, your water should take care of you, not the other way around.

SIMPLER

The FreshWater Salt System sanitizes water by using a maintenance-free, disposable cartridge to generate chlorine from salt. The cartridge lasts four months and can be easily replaced in seconds without tools or dealer assistance.

CLEANER

With fewer additives needed, your water can stay clean and fresh up to a full year* before being drained and refilled. This conserves water, saves you money, and reduces time previously spent on complicated water care.

FRESHER

Using salt to generate chlorine is a much fresher way to sanitize your water. Harsh odors are virtually eliminated, and water feels softer and gentler on eyes and skin.

Available on all Utopia® and Paradise® Series spas.

* Factors such as bather load and water chemistry can impact water life. When the spa is properly maintained, a three-pack of cartridges with the FreshWater Salt System will keep water clean and fresh for up to a full year.



freshwater
Salt System

HOT TUB ESSENTIALS



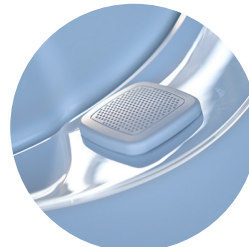
Steps



Covers and Lifters



Water Care



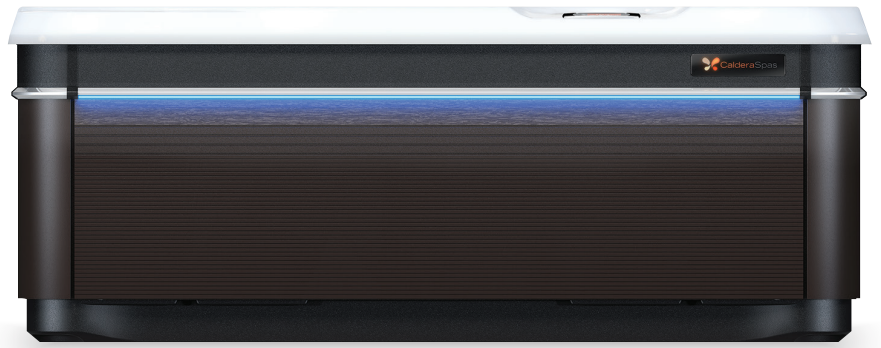
Entertainment Systems



CoolZone® Cooling System



Utopia[®] Series.



	CANTABRIA [®]	GENEVA [®]	NIAGARA [®]	TAHITIAN [®]	FLORENCE [®]	RAVELLO [™]
Size	9' x 7'7" x 38"	7'5" x 7'5" x 38"	7'5" x 7'5" x 38"	7' x 7' x 36"	7' x 7' x 36"	7' x 5'6" x 33"
Seats	8 Adults	6 Adults	7 Adults	6 Adults	6 Adults	3 Adults
Jets	74	55	52	48	46	39

CABINETS



PARCHMENT WITH ASPEN ASH WITH MEDIUM OAK JAVA WITH DARK OAK

COVERS



TAUPE SLATE CHOCOLATE

SHELLS



ARCTIC WHITE WHITE PEARL TUSCAN SUN MIDNIGHT CANYON PLATINUM*

EXCLUSIVE COMBINATION OF HIGH-PERFORMANCE DETAILS & TRANSFORMATIONAL DESIGN

- Total body restoration with up to 8 Hot Tub Circuit Therapy[®] stations in each spa
- Specialized jets including UltraMasseuse[®] system, OrbiSsage[®] rotating jets and the Atlas[®] Neck Massage system
- Easy to care for with the FreshWater[®] Salt System
- Insulating base pan for extra protection and efficiency
- Patented FiberCor[®] technology for unbeatable energy efficiency
- Remarkable power and efficiency
- Enhanced lighting
- Sleek stainless-steel trim with an integrated front panel LED light bar
- Touchscreen control panel
- Auxiliary control panel
- EcoTech[®] Plus cabinet offers a modern design with all-weather strength and durability
- Diagnostic logo light
- Available in three colors with matching steps and covers: Java, Ash and Parchment

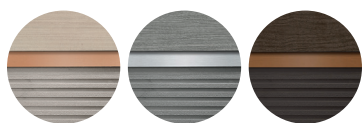
*Platinum is not available with the Parchment cabinet.

Paradise[®] Series.



	MAKENA [®]	SALINA [®]	REUNION [®]	SEYCHELLES [®]	MARTINIQUE [®]	KAUAI [®]
Size	7'5" x 7'5" x 36"	7'5" x 7'5" x 36"	7' x 7' x 36"	7' x 7' x 36"	7'5" x 6'4" x 34"	7' x 5'5" x 29"
Seats	6 Adults	7 Adults	7 Adults	6 Adults	5 Adults	3 Adults
Jets	46	40	38	43	34	31

CABINETS



PARCHMENT

ASH

JAVA

COVERS

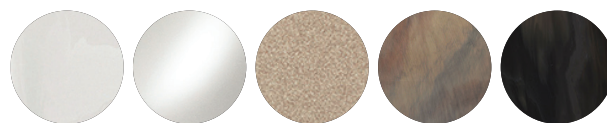


TAUPE

SLATE

CHOCOLATE

SHELLS



ARCTIC
WHITE

WHITE
PEARL

DESERT

TUSCAN
SUN

MIDNIGHT
CANYON

UNIQUE BLEND OF PREMIUM OPTIONS & FUNCTIONS FOR COMPLETE RESTORATIVE RELAXATION

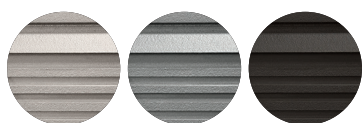
- Hot Tub Circuit Therapy[®] to maximize relief of tired muscles
- Easy to care for with the FreshWater[®] Salt System
- Conveniently placed diverter valves to adjust and direct jet pressure to the seats of your choice
- Durable EcoTech[®] cabinetry
- Energy-efficient FiberCor[®] insulation
- Illuminated Aquarella[®] waterfall
- Available in three colors with matching steps and covers:
 - Java with Dark Oak and Dark Copper Accent
 - Ash with Medium Oak and Brushed Nickel Accent
 - Parchment with Aspen and Light Copper Accent

Vacanza® Series.



	PALATINO®	MARINO®	VANTO®	TARINO™	CELIO®	AVENTINE®
Size	7'5" x 7'5" x 38.5"	7' x 7' x 36"	7' x 7' x 36"	6'10" x 6'10" x 33"	7' x 5'5" x 29"	5'4" x 5'4" x 29"
Seats	6 Adults	6 Adults	7 Adults	5 Adults	3 Adults	2 Adults
Jets	45	35	35	23	18	14

CABINETS



PARCHMENT

ASH

JAVA

COVERS

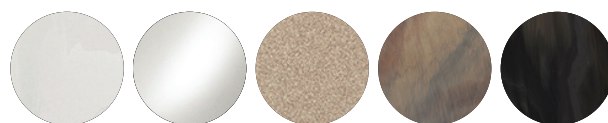


TAUPE

SLATE

CHOCOLATE

SHELLS



ARCTIC
WHITE*

WHITE
PEARL

DESERT*

TUSCAN
SUN

MIDNIGHT
CANYON

THOUGHTFULLY DESIGNED TO DELIVER DAILY RENEWAL AT A GREAT VALUE

- Integrated FROG® in-line water care
- Energy-efficient FiberCor® insulation
- Durable, low-maintenance EcoTech® cabinet
- 115v / 20 amp plug-in (Tarino, Celio and Aventine models)

- Available in three colors with matching steps and covers: Java, Ash and Parchment

*Aventine only available in Arctic White and Desert. Additional charges may apply to particular color combinations. See dealer for details.